

# State of Wyoming Corner Record

(In compliance with the *CORNER PERPETUATION AND FILING ACT*, Wyoming Statutes, 1997 Section 33-29-140 et. seq., and the Rules and Regulations of the Board of Professional Engineers and Professional Land Surveyors)

Reverse side of this form may be used if more space is needed.

Record of original survey and citation of source of historical information (if corner is lost or obliterated). Description of corner monumentation evidence found and/or monument and accessories established to perpetuate the location of this corner. Sketch of relative location of monument, accessories, and reference points with course and distance to adjacent corner(s) (if determined in this survey). Method and rationale for reestablishment of lost or obliterated corner.

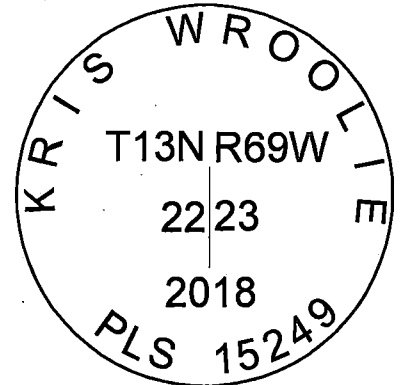
**LOCATION:** East Quarter Corner of Section 22, T.13N, R.69W,  
6th Principal Meridian, Laramie County.

**RECORD:** GLO: Set granite boulder 16x10x8.

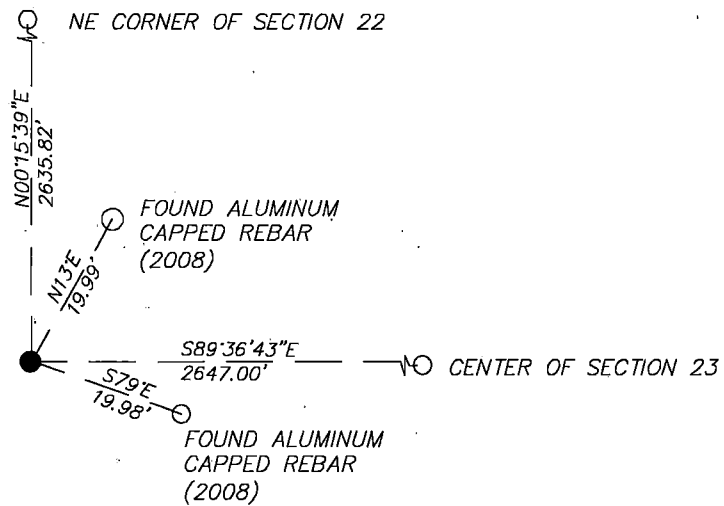
2008-- Roger H. Krum, LS2613, found granite stone  
0.5x0.5x0.6 with chiseled 1/4 on west side.

**RECOVERED:** 6x6 stone scribed 1/4 and 2 ties from 2008 Krum  
corner record. Accepting stone as corner location.

**RESET:** Set aluminum cap stamped LS15249 alongside stone.  
Measurement to NW23 (NE22) Does not agree with  
2008 record, but the monuments are the same.



## Monument Inscription



Date of Field Work: 12/16/18

Office Reference: 14261

## Cross Index Plat

1	2	3	4	5	6	7	8	9	10	11	12	13	14	15	16	17	18	19	20	21	22	23	24	25	
A	+	+	+	+	+	+	+	+	+	+	+	+	+	+	+	+	+	+	+	+	+	+	+	+	A
B	+	+	+	+	+	+	+	+	+	+	+	+	+	+	+	+	+	+	+	+	+	+	+	+	B
C	+	6	+	5	+	+	4	+	+	+	3	+	+	+	2	+	+	+	+	+	+	1	+	+	C
D	+	+	+	+	+	+	+	+	+	+	+	+	+	+	+	+	+	+	+	+	+	+	+	+	D
E	+	+	+	+	+	+	+	+	+	+	+	+	+	+	+	+	+	+	+	+	+	+	+	+	E
F	+	+	+	+	+	+	+	+	+	+	+	+	+	+	+	+	+	+	+	+	+	+	+	+	F
G	+	7	+	8	+	+	9	+	+	+	10	+	+	+	11	+	+	+	+	+	+	12	+	+	G
H	+	+	+	+	+	+	+	+	+	+	+	+	+	+	+	+	+	+	+	+	+	+	+	+	H
J	+	+	+	+	+	+	+	+	+	+	+	+	+	+	+	+	+	+	+	+	+	+	+	+	J
K	+	+	+	+	+	+	+	+	+	+	+	+	+	+	+	+	+	+	+	+	+	+	+	+	K
L	+	18	+	17	+	+	16	+	+	+	15	+	+	+	14	+	+	+	+	+	+	13	+	+	L
M	+	+	+	+	+	+	+	+	+	+	+	+	+	+	+	+	+	+	+	+	+	+	+	+	M
N	+	+	+	+	+	+	+	+	+	+	+	+	+	+	+	+	+	+	+	+	+	+	+	+	N
O	+	+	+	+	+	+	+	+	+	+	+	+	+	+	+	+	+	+	+	+	+	+	+	+	O
P	+	19	+	20	+	+	21	+	+	+	22	+	+	+	23	+	+	+	+	+	+	24	+	+	P
Q	+	+	+	+	+	+	+	+	+	+	+	+	+	+	+	+	+	+	+	+	+	+	+	+	Q
R	+	+	+	+	+	+	+	+	+	+	+	+	+	+	+	+	+	+	+	+	+	+	+	+	R
S	+	+	+	+	+	+	+	+	+	+	+	+	+	+	+	+	+	+	+	+	+	+	+	+	S
T	+	30	+	29	+	+	28	+	+	+	27	+	+	+	26	+	+	+	+	+	+	25	+	+	T
U	+	+	+	+	+	+	+	+	+	+	+	+	+	+	+	+	+	+	+	+	+	+	+	+	U
V	+	+	+	+	+	+	+	+	+	+	+	+	+	+	+	+	+	+	+	+	+	+	+	+	V
W	+	+	+	+	+	+	+	+	+	+	+	+	+	+	+	+	+	+	+	+	+	+	+	+	W
X	+	31	+	32	+	+	33	+	+	+	34	+	+	+	35	+	+	+	+	+	+	36	+	+	X
Y	+	+	+	+	+	+	+	+	+	+	+	+	+	+	+	+	+	+	+	+	+	+	+	+	Y
Z	+	+	+	+	+	+	+	+	+	+	+	+	+	+	+	+	+	+	+	+	+	+	+	+	Z
1	2	3	4	5	6	7	8	9	10	11	12	13	14	15	16	17	18	19	20	21	22	23	24	25	

Firm/Agency, Address

Westwood Professional Services  
3701 12th St. N. Ste. 206  
St. Cloud, MN 56303

Telephone Number: (320)-253-9495

This corner record was prepared by me or under my direction and supervision.

SEAL & SIGNATURE



Corner Name East Quarter Corner Section 22, T 13 N, R 69 W, 6th P.M. Cross-Index No.: P-17

County: Laramie Wyoming

SBRPEPLS/PLSW: March 1994; PLSW January 1998



RECP #: 752159  
RECORDED 5/1/2019 AT 2:32 PM BK# 2619 PG# 2472  
Debra K. Lee, CLERK OF LARAMIE COUNTY, WY PAGE 1 OF 1